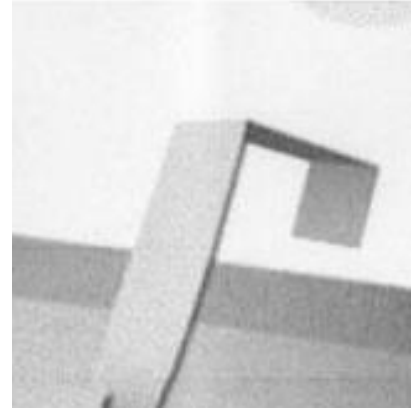




OVERDOOR ACCESSORY ORGANIZER

- Place the top hook of the item over the door as shown on the illustration to the right. (Note that the top hook of the item is not attached to the stretchable material.)
- Now secure the bottom hook of the item (attached to the stretchable material) to the bottom part of your door the same way.



Adjust Hooks:

- Tilt hook up towards strap.
- Slide hook to desired position. Hook will self-lock into place.